



# SEMI AUTOMATIC SHOTGUN INSTRUCTION MANUAL

Read the instructions and warnings in this manual carefully before using this firearms



1370 BAR  
STEEL SHOT



## GUN SAFETY RULES

Observe these rules of safe gun handling.

- 1.** Always keep the muzzle pointed in a safe direction. Watch the muzzle at all time, never point a gun. accidentally or intentionally, at any person or anything you do not intend to shoot. Identify the target before shooting; do not shoot at sounds.
- 2.** Always treat a gun as if it is loaded - it may be!
- 3.** Keep your finger off the trigger while operating the action and at ali other times until you are ready to shoot.
- 4.** Keep the safety "on" or in the "safe" position at ali times until you are ready to fire. Do not rely on your gun's safety, the safety on any gun is a mechanical device and is not intended as a substitute for common sense or safe gun handling.
- 5.** Learn how your gun functions and handles. If you do not thoroughly understand the proper use and care of your gun, seek the advice of someone who is knowledgeable
- 6.** Do not alter or modify any part of the firearm.
- 7.** Store guns unloaded, separate from any ammunition, and out of the reach of children.
- 8.** Be sure the barrel is clear of any obstructions before loading. Make it a habit to check the barrel every time before loading.
- 9.** Be sure you have and use the proper ammunition. 20 gauge shell a 3 inch shell may fit into a 2  $\frac{3}{4}$  inch chamber, but the crimp at the mouth of the shell will unfold into the forcing cone. If either of these things occur and you fire the gun, the gun will explode, damaging the gun and possibly causing serious injury or death to you and those around you.
- 10.** Wear protective shooting glasses and adequate ear protection when shooting.

**11.**Never climb or jump over anything, such as a tree, fence, or ditch, with a loaded gun. Open the barrel, remove the shells and hand the gun to someone else or place it on the ground on the other side of the obstacle before Crossing it yourself. Do not lean a gun against a tree or other object; it could fail and possibly discharge.

**12.**Do not shoot at a hard surface or at water. Bullet and shot can ricochet or bounce off and travel in unpredictable directions with great velocity.

**13.**Never transport a loaded gun. DO not place a loaded gun into a vehicle. The gun should be unloaded and placed into a case when not in use.

**14.**Never drink alcoholic beverages before or during shooting.

### **INTRODUCTION TO TARGET ARMS**

For many years, TARGET ARMS has been importing quality shotguns. Combine the old world quality with modern technology, and you have TARGET ARMS Shotguns.

We at TARGET ARMS thank you for the privilege of delivering a product to you that will provide you with years of pleasurable use. Happy shot gunning.

### **ABOUT YOUR SEMI AUTOMATIC SHOTGUN**

Your TARGET Arms shotgun is gas operated. The gas created from firing a live shot shell operates the action. Once the first shell has been fired, the next shell in the magazine will automatically cycle into the chamber, and this cycle will continue (each time the trigger is pulled) until all shells loaded in the magazine have been fired. The bolt will remain locked in the open position after the last shell is fired.

Technologically advanced gas operating system allows you to shoot 2 3/4 and 3" shells interchangeably with any ammunition of the proper gauge for your shotgun with flawless performance. This and other fine features ensure that your shotgun will be a source of pride and pleasure.

## SAFETY SWITCH OR BUTTON

The safety is designed to stop the trigger mechanism.

**DON'T RELY ON YOUR GUN'S SAFETY, TREAT EVERY GUN AS IF IT WERE LOADED AND READY TO FIRE.** The safety on any gun is a mechanical device, and it is not intended as a substitute for common sense or safe gun handling.

Always keep the muzzle pointed in a safe direction.

**A.** The safety is located behind the trigger, and provides protection against accidental or unintentional discharge under normal usage when properly handled.

**B.** To engage the safety, push the button so that it protrudes from the right side of the gun and the RED BAND MARKING CAN NOT BE

SEEN. The safety should always be in the "on" or "safe" position until you intend to fire the gun (photo 1).

**C.** When you are ready to fire the gun, press the safety button to the "off" or "fire" position, so that the safety protrudes from the left side of the gun and the RED BAND MARKING IS SHOWING.



**DANGER:** The gun will fire when the trigger is pulled intentionally or accidentally when the RED BAND MARKING IS SHOWING.



## ASSEMBLY

To assemble the gun, follow the steps below:

Unscrew the cap (photo 3) and remove the forend (photo 4).

Pull the bolt hanging latch placed on the rear side of the carrier (photo 5).

Assemble the barrel while centering the magazine and the receiver (photo 6). Reassemble the forend (photo 7) and screw the cap onto the threaded magazine tube (photo 8).





You can load your shotgun in the following ways:

1. Be certain the safety is in the "on" or "safe" position (see section regarding operation of the safety on pages 3 and 4).

Draw or pull the bolt rearward until it locks in the open position (photo 12). Place a shell into the breach (photo 9). Release the bolt by pressing the button located toward the front of the receiver (photo 10). This chambers a round, and the gun will fire if the trigger is pulled with the safety in the "off" or "fire" position. You can then load additional shells into the magazine by inserting them through the loading port on the bottom of the receiver and pushing them into the magazine (photo 11).

2. Be certain the safety is in the "on" or "safe" position (see section regarding operation of the safety on pages 3 and 4).

Draw or pull the bolt rearward until it locks in the open position (photo 12). Load shells into the magazine by inserting them through the loading port on the bottom of the receiver and pushing them into the magazine (photo 11). Push back the magazine shell latch on the rear side of the carrier (photo 13). This allows the shell to exit the magazine and move onto the carrier. Release the bolt by pressing the button located toward the front of the receiver (photo 10). This chambers a round, and the gun will fire if the trigger is pulled with the safety in the "off" or "fire" position.

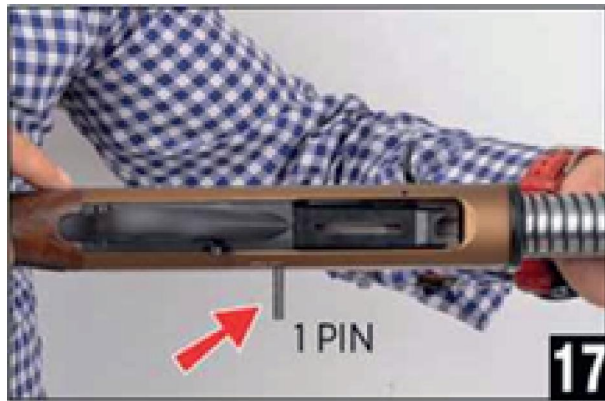
## DISASSEMBLY

Unscrew the forend cap.

Take the forend and the barrel off(photo 15).

Take the handle off from the bolt and then all the bolt assembly (photo 16).

With a tool, push the pins of the trigger group out (photo 17) and take the trigger group off(photo 18).

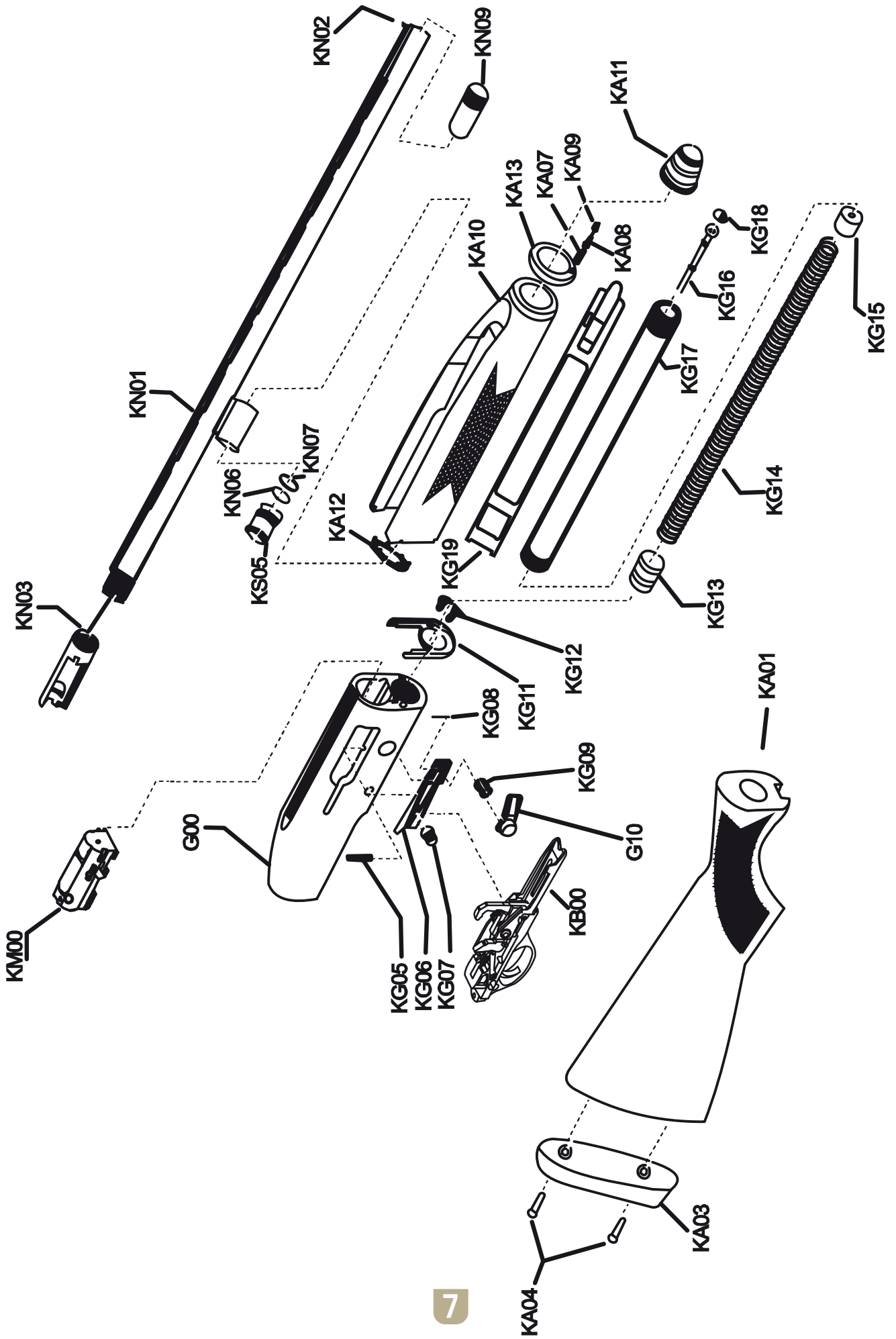


## REASSEMBLY

Assemble on the magazine tube, the action spring and insert the bolt group into the receiver.

Insert the handle into its hole.

Reassemble the trigger group fixing it with the pins.

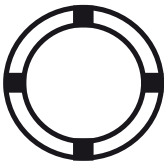
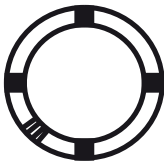
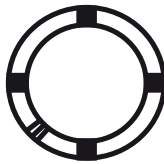
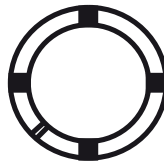
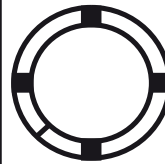
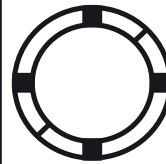




KB00	TRIGGER GROUP ASSEMBLY	KA04	RUBBER RECOIL PAD SCREW
KG00	RECEIVER	KA07	FORE-END BLOCKER SPRING
KG01	RECOIL SPRING TUBE	KA08	FORE-END BLOCKER
KG03	RECOIL SPRING	KA09	FORE-END BLOCKER SCREW
KG04	RECOIL SPRING CAP	KA10	WALNUT FORE-END
KG05	CARRIER LATCH PIN	KSA10	SYNTHETIC FORE-END
KG06	CARRIER LATCH	KA11	FORE-END NUT
KG07	CARRIER LATCH SPRING	KA12	FORE-END PINNED PLATE
KG08	CARRIER LATCH BUTTUN PIN	KA13	FORE-END PLATE
KG09	CARRIER LATCH BUTTUN SPRING	KN01	BARREL
KG10	CARRIER LATCH BUTTUN	KN02	FRONT SIGHT
KG11	FORE-END LATCH	KN03	BREECH
KG12	FORE-END LATCH SCREW	KN07	GAS HOLE O-RING
KG13	MAGAZINE LOGN SPRING CUP	KN09	CHOKE TUBE
KG14	MAGAZINE SPRING	KN10	GAS HOLE JOINT
KG15	MAGAZINE SHORT SPRING CUP	KN11	GAS HOLE PLUG
KG16	MAGAZINE PLUG	KS05	PISTON
KG17	MAGAZINE TUBE	KS06	PISTON O-RING
KG18	MAGAZINE PLUG BLOCKER	KS07	PISTON RING
KG19	ACTION BAR		
KA01	WALNUT STOCK		
KSA01	SYNTHETIC STOCK		
KA03	RUBBER RECOIL PAD		

## USAGE OF CHOKE TUBES

The choke controls how open or tight the pattern of the shot will be. The chart below lists the chokes available (from open to tight), and the cores pending marks that indicate the specific choke.

	SKEET	IC	M	IM	F	XF
CHOKE TUBE						
BBLs	CL	****	***	**	*	XF

Never fire your gun or run cleaning tools through a barrel that uses a choke tube without having a choke installed. The threads of the choke tube and the internal threads of the barrel should be cleaned after each use and before installation of the tube. Your TARGET ARMS shotgun uses choke tubes.

To install a tube, insert the tube into the top of the barrel and tighten with your fingers. Once the tube is finger tightened, tighten the rest of the way with the appropriate choke tube wrench until the tube is snug. DO NOT over tighten or forcefully tighten with the wrench.

## MAINTENANCE AND CLEANING

Caution : Make sure the gun is UNLOADED.

**1.** Make sure the broad, polished finely fitted mating surface of the breech block and receiver is especially clean and lightly oiled with high quality gun oil. Do not use silicone or lanolin (Do not use WD-40).

**2.** Run an oil patch through the bore with a cleaning rod starting from the breech end. To prevent leading, use a cleaning solvent and brass brush to clean the bore periodically. Follow this cleaning with one or two clean oil patches.

**Important:** If your gun is equipped with choke tubes, do not use a brass brush to clean the barrels without having a choke tube installed. Barrels that utilize choke tubes must also have the choke tubes removed to clean and oil the threads inside the barrel and the choke tubes themselves. This will protect the threads and prevent dirt build up that can cause tubes to become difficult to remove. Never fire your gun without choke tubes snugly tightened in barrels. Do not over tighten choke tubes. Wipe all exposed metal surface with an oiled cloth before storing. Do not squirt or pour oil into the inside mechanism because it may hamper proper functioning. After extended periods of heavy use, your gun should be taken to a qualified gunsmith to have the action disassembled for professional cleaning and lubrication.

**3.**Care for your wood stock and forearm the same way you would a piece of furniture with the same finish.

## STORAGE

Clean thoroughly and oil your gun before storage. Store the gun in a case to prevent scratches and dents. Store in a dry place to prevent corrosion.

Store the gun away from children and in place where it cannot be obtained by those unauthorized to use it. Always store gun unloaded and separately from any ammunition.

## IMPORTANT USAGE OF STEEL SHOT

The choke (bore constriction) in all modern shotguns has been established Based on the pattern performance of shot shells loaded with lead shot. When using the steel shot shells, you will notice a different performance in pattern density versus the established lead shot pattern, because the steel shot is harder and lighter than lead shot.

You should be aware of the following differences and cautions: Never shoot steel shot loads in a full choked barrel or full choke tubed barrel. To do so may cause the barrel to swell or rupture. In general, steel shot fired with a modified choke will produce the equivalent of a lead full choke pattern. This will be true of all steel shot sizes up to and including no. 2. The established improved cylinder chokes will produce the equivalent of a (lead) modified choke pattern. All steel shot sized larger than no. 2, and including special sized such as -F-, ", Tetc." should be used only with improved cylinder chokes. These steel shot sized, when used in improved cylinder chokes, will produce patterns equivalent to (lead) full choke patterns. The established cylinder choke or bore will produce the equivalent of a modified (lead) pattern. Additional information concerning the use of steel shot is available from the best ammunition companies.

## SERVICE AGREEMENT AND LIMITED WARRANTY

TARGET ARMS agrees to service its products free of charge for defects in materials and workmanship in accordance with the service agreement listed below.

The obligation of TARGET ARMS under this agreement is limited to the repair or replacement of unserviceable parts and does not cover any incidental or consequential damages. Other than the express warranty contained herein TARGET ARMS makes no warranties, express or implied.

TARGET ARMS will repair or replace any unserviceable part(s) for one (1) year from date of purchase and further will supply free parts (Wood not included) for an additional one (1) year in accordance with the above warranty statement provided your firearm had not been altered, abused, willfully damaged, or damaged by overpressure ammunition. This agreement is not transferable;

its benefits apply only to the original purchaser. To obtain free service during the time this agreement is in effect, make sure your firearm is unloaded, and send it to TARGET ARMS

This agreement and the warranties contained herein are void if your registration card is not received with a copy of your sales slip within 30 days from date of purchase.

## SHIPPING

When returning your gun for service, please take care in packing. Disassemble your gun, wrap in paper or other protective material and place gun in the original box. (THIS BOX WILL PROTECT THE GUN BUT IS NOT DESIGNED FOR SHIPPING). Wrap box in a cardboard box approved for interstate shipping. TARGET ARMS is not responsible for damage incurred during shipping.

## PURCHASER'S RECORD

**PURCHASER** : .....

**Street** : .....

**City** : .....

**State** : .....

**Zip** : .....

**Phone** : .....

**Purchase Date** : .....

**PRODUCT Model** : .....

**Gauge** : .....

**Serial:** : .....

**SIGNATURE** .....

**Please sign and return  
this card to validate warranty.**

When shooting or hunting always acquire the permission of the landowner. Respect the land. Do not litter, use gates when possible, leave open and closed gates closed. Drive vehicles only where advance permission has been granted any always express gratitude for use of another persons land. Offer your labor or game as repayment for the privilege of use. Remember you are helping develop a reputation for all sportsmen/sportswomen.

*Thank You*



Phone-Fax: +90 332 524 69 21

Gsm: +90 543 832 40 45

Üzümlü/Beyşehir/KONYA/TURKEY

[www.target-arms.com](http://www.target-arms.com)

[sales@target-arms.com](mailto:sales@target-arms.com)